

Decoration



Pilkington Texture
Glass Range



PILKINGTON
NSG Group Flat Glass Business

Choose from a wide
range of genuine
Pilkington designs



Contora™

4



Oak™

4



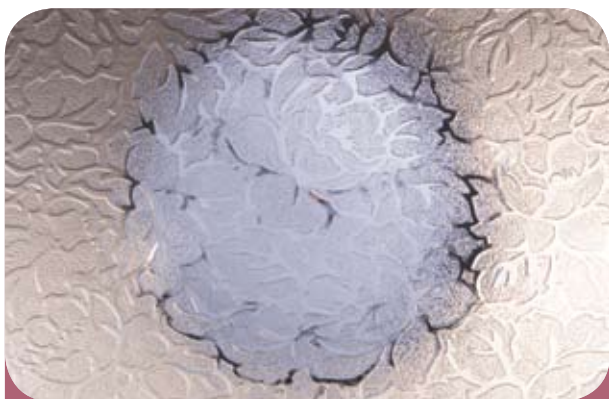
Charcoal Sticks™

4



Digital™

3



Florielle™

4



Taffeta™

3



Pelérine™

5



Chantilly™

2



Everglade™

5

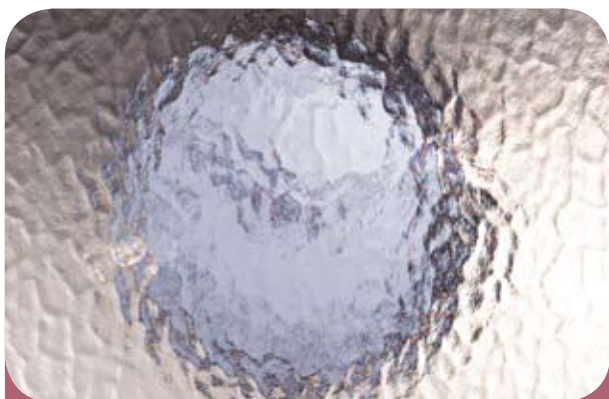
Ask for our designs by name





Mayflower™

4



Minster™

2

*Due to the manufacturing process, the pattern of **Warwick™** is completely random and no two pieces are the same.*



Warwick™

1

For important information on the use of this pattern please visit www.pilkington.co.uk/textureglass



Pilkington Oriel **Coppice**™

Inset: Pilkington Oriel Texture **Coppice**™

Pilkington Oriel Range

With a superb range of designs, together with diffused glass options for each design, this premium range of etched glass adds a touch of style and elegance to your home.



Pilkington Oriel **Brocade**™



Pilkington Oriel Texture **Brocade**™



Pilkington Oriel **Laurel**™



Pilkington Oriel Texture **Laurel**™



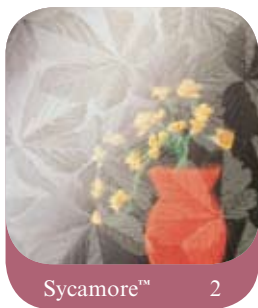
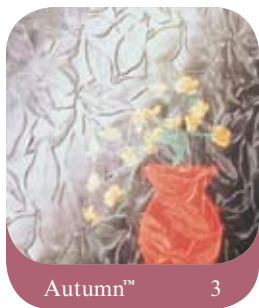
Pilkington Oriel **Canterbury**™



Pilkington Oriel Texture **Canterbury**™

Pilkington replacement range

For customers who require replacement glass to match an existing pattern, a number of well-established designs are still available.





Technical information

However you use Pilkington glass it is essential for safety and performance reasons that it is correctly specified and installed. Common areas of impact risk, where it is recommended that impact safety glass classified by BS EN 12600 is installed, include:

- Glazed doors
- Glazing adjacent to doors
- Low-level glazing
- Bathroom areas
- Protective barriers
- Furniture and cabinets

The Pilkington Texture Glass pattern brand names are registered trademarks of the Pilkington Group.

Five levels of privacy



Level 1



Level 2



Level 3



Level 4



Level 5

- Pilkington Texture Glass offers privacy and style throughout the home
- Five levels of privacy are available, graded from 1 (least obscuration) to 5 (greatest obscuration)
- There are 12 original patterns in the main range, including exclusive designs by Oliver Heath of Blustin Heath Design, a regular on the BBC's Home Front and Changing Rooms series
- All are available toughened or laminated for safety and security
- All are suitable for double glazing
- The range is widely available from your local glass merchant or glazier

For privacy, pure style or to allow more light into internal rooms, Pilkington Texture Glass gives you a fantastic range of attractive options.

The Pilkington range gives you no fewer than 18 different designs, together with our premium range of etched glass. From classic to contemporary, no one offers a bigger choice of original patterns.

The advantages of Pilkington Texture Glass are easy to see too: it allows maximum light while maintaining your chosen level of privacy or obscurity, and also forms an attractive decorative feature itself. That's why our texture glass is the most trusted in the market.

With a wide range of designs and the Pilkington Oriel etched glass range offering even more possibilities – all with the quality you would expect from the Pilkington range – there really is no better choice of decorative glass for your home.



This publication provides only a general description of the product. Further, more detailed information may be obtained from your local Pilkington Building Products supplier. It is the responsibility of the user to ensure that the use of this product is appropriate for any particular application and that such use complies with all relevant legislation, standards, code of practice and other requirements. To the fullest extent permitted by applicable laws, Nippon Sheet Glass Co. Ltd. and its subsidiary companies disclaim all liability for any error in or omission from this publication and for all consequences of relying on it. The Pilkington Texture Glass pattern brand names are registered trademarks of the Pilkington Group.

Please note that imagery throughout is for illustration purposes only.



CE marking confirms that a product complies with its relevant harmonised European Norm.

The CE marking label for each product, including declared values, can be found at www.pilkington.com/CE



PILKINGTON
NSG Group Flat Glass Business

Pilkington Building Products - UK

Prescot Road, St Helens, WA10 3TT United Kingdom

Telephone 01744 692000 Fax 01744 692880

pilkington@respond.uk.com

www.pilkington.co.uk



NRG Triple Glazing

36mm Triple-Glazed Window

Platinum[®]
NRG



STANDARD



6-chamber profile

www.platinumnrg.co.uk

NRG Triple Glazing

Platinum[®]
NRG

HARDWARE OPTIONS



A select range of hardware finishes are available to suit contemporary or traditional installations.

STANDARD FINISHES

PlatinumNRG[®] Chamfered



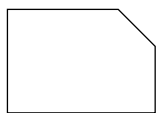
Whitegrain



Oak



Rosewood



White



Interior

Oak on White



Interior

Rosewood on White

PlatinumNRG[®] Sculptured



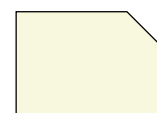
Rosewood



Oak



Black



Cream



Interior

Rosewood on White



Interior

Oak on White



Interior

Black on White



Whitegrain

OPTIONAL FINISHES

A wide range of woodgrain and coloured-foil options are available for either or both internal and external faces or even differing frames and sashes.

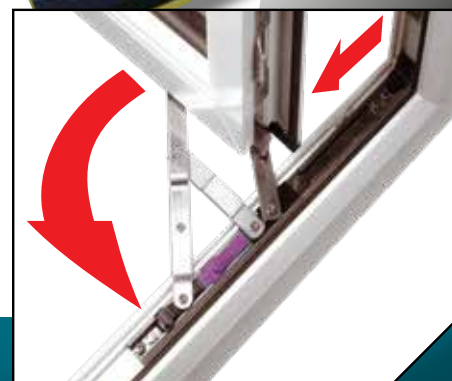
Easy-Clean Hinges



The Easy-Clean hinges enable the sash to be opened at 90 degrees



By pressing down on the purple button, the sash is released and can slide along its hinge runner



This now gives access to the front of the sash from indoors for cleaning.



NRG Triple Glazing

PlatinumNRG Triple Glazing uses three panes of glass which form two insulating layers that provide the ultimate thermal and acoustic insulation.

Almost indistinguishable from their double glazed counterparts, but superior in terms of performance by using two panes of Low E glass (the internal and middle panes), two warm edge spacer bars and two argon-filled cavities. Add to this the external pane of glass - which lets in more of the sun's warmth - and the PVCu window frame, and you have a window that will make your home a warmer, quieter, cheaper and more environmentally friendly place to live.

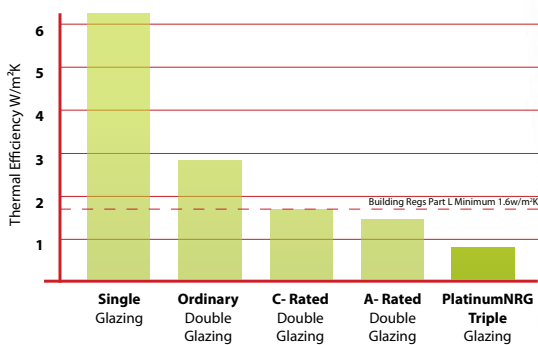
The industry-leading 6-chamber PVCu frame eliminates the need for thermal inserts and uses structural PVCu for rigidity rather than heat-conducting steel.

Triple glazing will plug the deficit as it can retain heat unlike any other window type. It can also reflect heat into the home due to the internal pane of soft coat glass inserted into the PVCu frame.

PlatinumNRG Triple Glazing exceeds the thermal efficiency of even an A-Rated window by over 35%.

The additional cavity created by having 3 panes of glass increases sound insulation by over 20% - ideal for installations close to main roads, railway lines, airports or in busy urban environments.

By adding a third pane of glass to your windows you will be enhancing security in your home as not only are they internally glazed but they also use toughened glass for the inner pane.

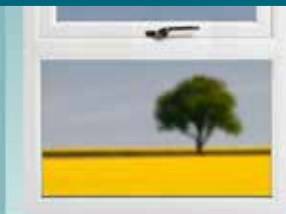


**PASSIVHAUS
COMPLIANT
when using
additional components**

To achieve a $0.8W/m^2K$ 'U'-Value, Krypton gas, a glazing flipper and thermal dam.

**Platinum[®]
NRG**

NRG Triple Glazing



GLOSS FINISH

Polished finish reduces cleaning and maintenance and retains a cleaner look for longer helping resist airborne pollutants and moulds

HIGH TECHNOLOGY

High-tech 6-chamber design intelligently uses structural PVCu for high strength in both the sash and the frame

CHAMFERED or SCULPTURED PROFILE

A choice of either a modern chamfered profile or a more traditional sculptured profile

CHOICE OF FINISHES

A selection of standard colours or an extensive range of pre-finished foils are available

100% LEAD FREE PVCu

Completely free of poisonous lead stabilisers

ENERGY EFFICIENCY

PlatinumNRG Triple Glazing is one of the best performing products on the market, taking full advantage of the increased thermal efficiency offered by its six chamber profile.



Always use a current GGF Member.
To see the latest list of GGF Members
visit www.ggf.org.uk/directory



Glass and Glazing Federation

ADVICE TO CONSUMERS
REFERENCE 30.4
SEPTEMBER 2014

Quality of Vision

Insulating Glass Units



Buying the Best

High standards of product and service are of paramount importance to Glass and Glazing Federation Members. They have a reputation for quality to maintain. All GGF Members are obliged to follow the GGF Code of Good Practice. This lays down the standards required, right through from advertising and selling to the workmanship, materials and after sales. By dealing with GGF Members, customers can have peace of mind. If there should be any misunderstanding that cannot readily be resolved, the GGF offers a conciliation service. All deposits paid by customers are protected by insurance.

Sealed Units



Sealed units provide a high standard of vision. The following is a guide to the quality that can be expected.

Glass used in the manufacture of sealed units is similar to that used traditionally for single glass and will, therefore, have a similar level of visual quality.

Viewing sealed units for scratches on the outer faces of the panes must be carried out before any rendering, plastering or other works adjacent to the glazing takes place, and as early as reasonably practicable following installation.

How to do a Professional Inspection



Stand in the room no less than 2 metres away from the sealed unit and look directly through it.

- For toughened, laminated or coated glasses, stand no less than 3 metres away.
- Where it is not possible to stand at the right distance then stand as far away as you can from the sealed unit.
- Do so in natural daylight, but not directly towards the sun and with no visible moisture on the surface of the glass.
- Exclude 50mm wide band around edge of the glass from the check.
- Glass must be viewed at an angle of 90°.

What to Expect when Carrying Out an Inspection



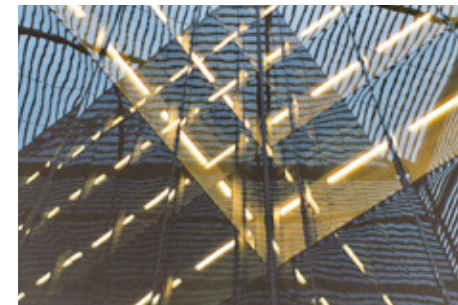
Flat transparent glass, including laminated, toughened or coated glass is acceptable if the following are neither obtrusive nor bunched:

- Bubbles or blisters
- Fine scratches not more than 25mm long
- Minute particles

The obtrusiveness of blemishes is judged by looking through the glass, not at it, under natural light. It must be understood that the glass used in sealed units is a processed glass, and as a consequence, blemishes are to be expected.

Sealed units with optical defects such as smears, finger prints or other dirt on the cavity faces of the glass, or extraneous material in the cavity are unacceptable, if they are visually disturbing.

Special Glasses



Toughened glass may show visual distortions which are accentuated by reflections in sealed units. This is a natural phenomenon and not a fault.

Laminated glass may have a few more blemishes due to it being made of several layers.

Some low emissivity coatings may produce transient visual effects.

In some lighting conditions the coating may look like a transparent film or produce a haze, i.e. a cloudy look to the surface.

When light coloured objects such as net curtains are placed close to the glazing they may look slightly darker.

See GGF Leaflet:
Low Emissivity Glass and its Visual Quality

Condensation



Whilst sealed units will generally reduce the incidence of condensation, it may still occur under certain conditions.

See GGF Leaflet:
*Condensation Some Causes,
Some Advice*

Brewster's Fringes – the Rainbow Effect



Small transitory rainbow effects are sometimes produced by the glass refraction of light. Their appearance is due to high quality flat glass sheets being placed parallel to each other.

Multiple Reflections

This occurs in certain light conditions and is caused by multiple surface reflections within sealed units which may vary from pane to pane.

Patterned Glass

This document does not apply to patterned glass as its manufacturing process is different.

Glass and Glazing Federation
54 Ayres Street
London SE11EU

T: 020 7939 9100
E: info@ggf.org.uk
www.ggf.org.uk
Follow us on Twitter: [@GGF_News](https://twitter.com/GGF_News)

